

Technical drawing of a rectangular frame structure, likely a window or door frame, showing dimensions and labels.

The drawing includes the following labels and dimensions:

- Labels:**
 - Stena S3 (Top wall)
 - Stena S4 (Right wall)
 - Prelivna Stena (Internal horizontal structure)
 - Stena S1 (Bottom wall)
- Dimensions:**
 - Overall width: 450
 - Overall height: 365
 - Internal width: 400
 - Internal height: 200
 - Top wall thickness: 25
 - Right wall thickness: 25
 - Bottom wall thickness: 25
 - Left wall thickness: 25
 - Internal horizontal structure height: 15
 - Internal horizontal structure width: 100
- Structural Details:**
 - Reinforcement bars are indicated by circles with numbers and diameters, such as ①30RØ12/15, ②±1RØ12, ③±1RØ12, ④28RØ10/15, and ⑤28RØ8/15.
 - Dimensions for reinforcement bars are given as ①25RØ12/15, ②±1RØ12, ③±1RØ12, ④28RØ10/15, and ⑤28RØ8/15.

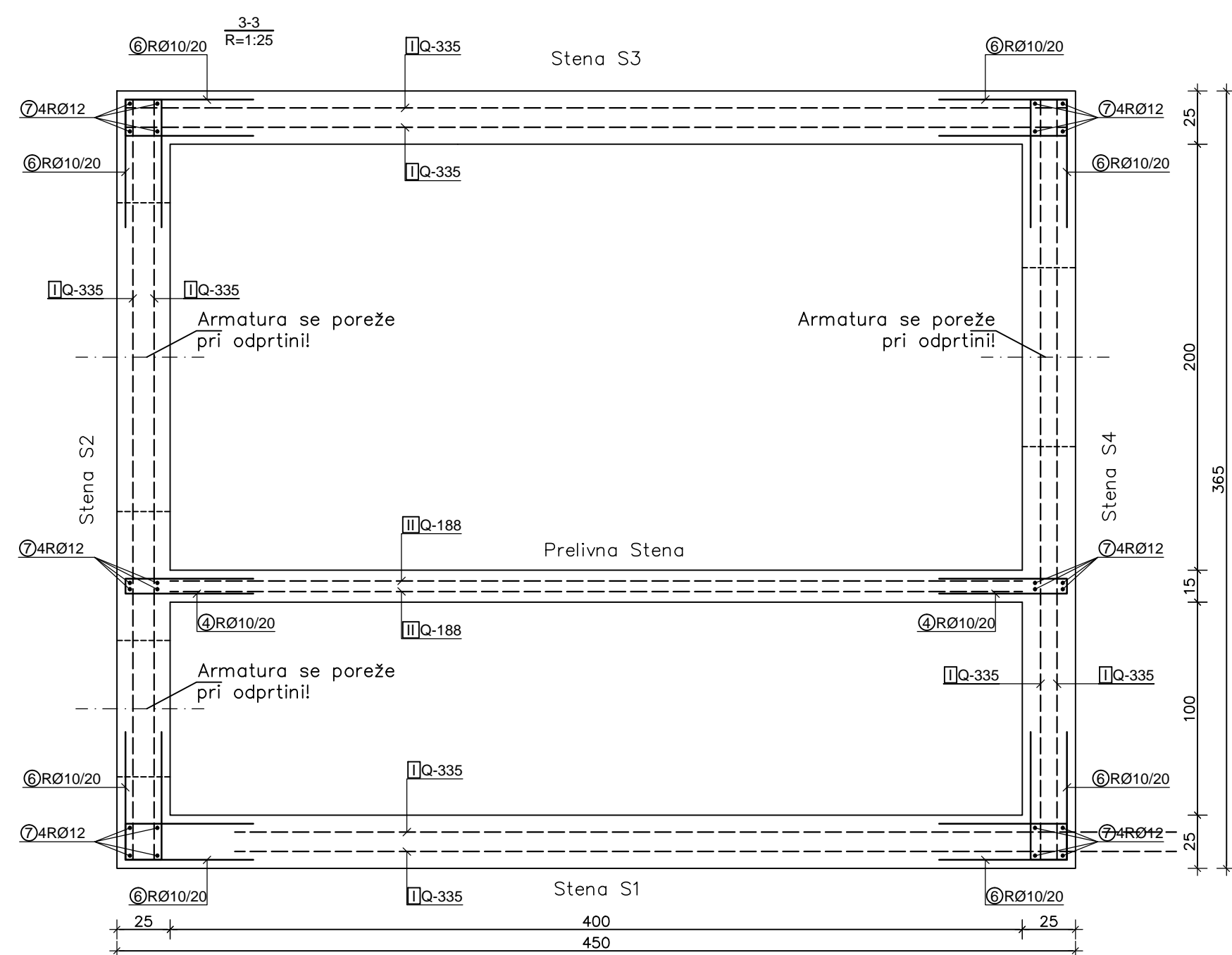
Technical drawing of a window frame assembly, showing three views: Stena S2, Stena S3, and Stena S4. The drawing includes dimensions for the frame and glass panes, and labels for various components.

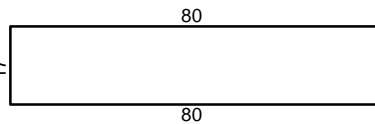
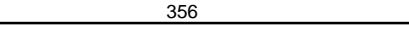
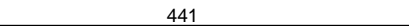
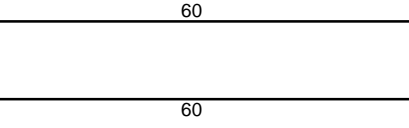
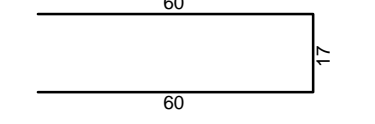
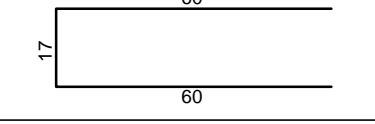
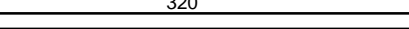
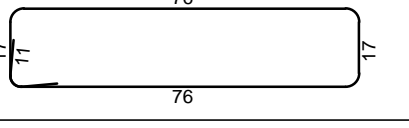
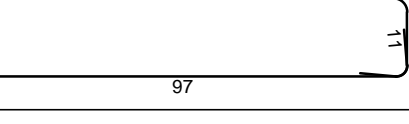
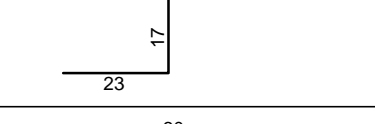
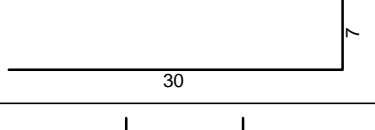
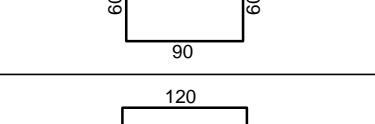
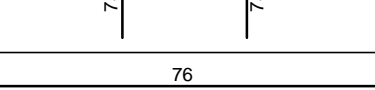

Stena S2 (Left View): Shows the frame with dimensions 25, 80, 25, 190, 450. Components labeled include 14RØ12, 9RSØ10/15, 12RØ10/15, 10RØ10/15, 13RØ10/15, and 9RSØ10/15.

Stena S3 (Top View): Shows the frame with dimensions 25, 80, 25, 190, 450. Components labeled include 14RØ12, 9RSØ10/15, 12RØ10/15, 10RØ10/15, 13RØ10/15, and 9RSØ10/15.

Stena S4 (Right View): Shows the frame with dimensions 25, 80, 25, 190, 450. Components labeled include 14RØ12, 9RSØ10/15, 12RØ10/15, 10RØ10/15, 13RØ10/15, and 9RSØ10/15.

Stena S1 (Bottom View): Shows the frame with dimensions 25, 80, 25, 190, 450. Components labeled include 14RØ12, 9RSØ10/15, 12RØ10/15, 10RØ10/15, 13RØ10/15, and 9RSØ10/15.

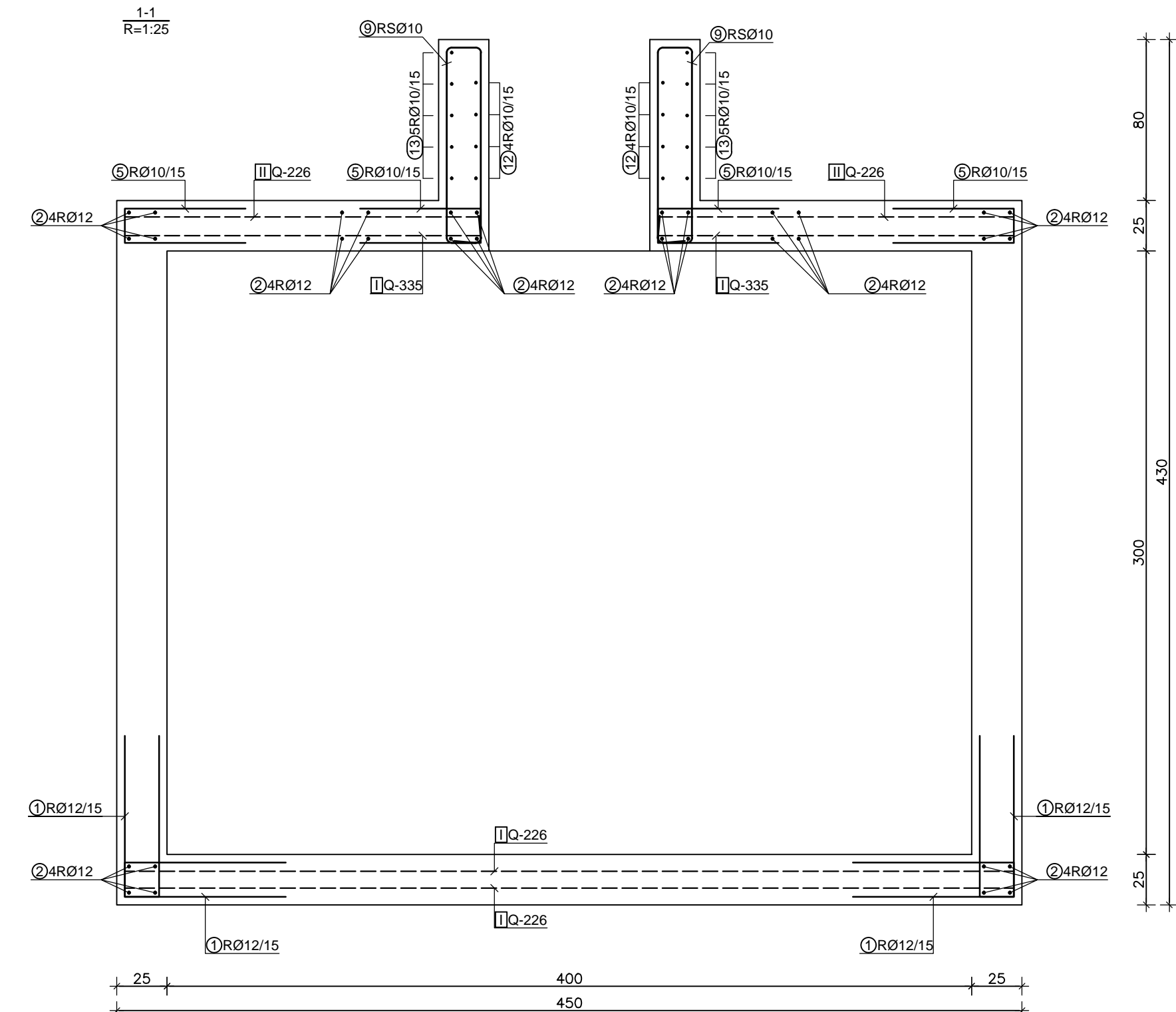
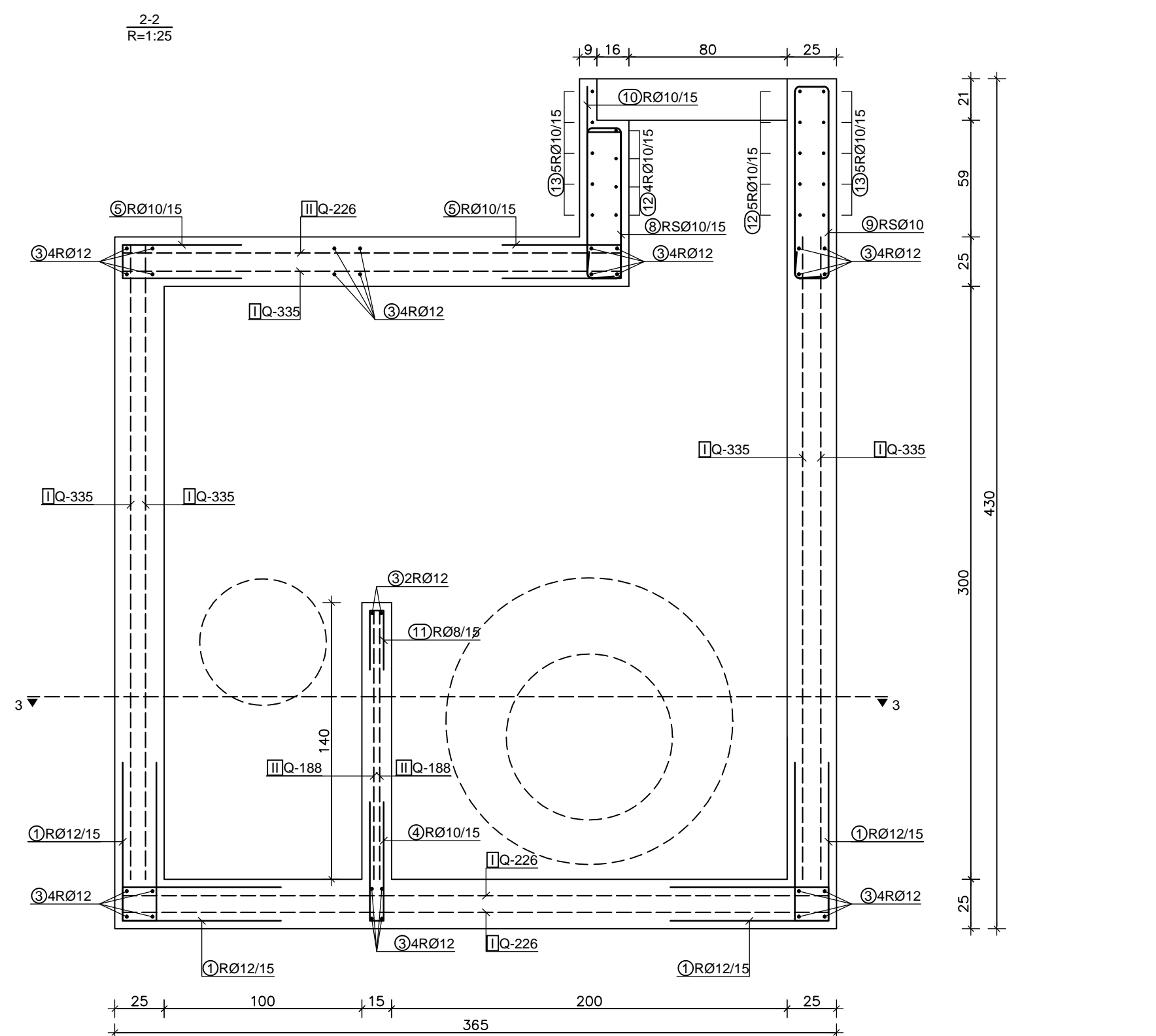
[illegible]

Palice - specifikacija						
ozn	oblika in mere [cm]	Ø	lg [m]	n [kos]	lgn [m]	Opomba
Palice (1 kos)						
1		12	1.77	220	389.40	
2		12	3.56	32	113.92	
3		12	4.41	30	132.30	
4		10	1.27	46	58.42	
5		10	1.37	124	169.88	
6		10	1.37	128	175.36	
7		12	3.20	24	76.80	
8		10	2.08	27	56.16	
9		10	2.50	81	202.50	
10		10	0.70	27	18.90	
11		8	0.67	28	18.76	
12		10	2.10	27	56.70	
13		10	2.70	30	81.00	
14		12	0.76	48	36.48	

Palice - izvlaček			
Ø [mm]	lg [m]	Teža enote [kg/m]	Teža [kg]
S500			
8	18,76	0,40	7,4
10	818,92	0,62	505,2
12	748,90	0,89	665,0
Skupaj (S500)			1177,7
Skupaj			1177,7

Beton: C 25/30, xc2, PVII
Podložni beton: C8/10,
Zaštitni sloj: 4cm
Armatura: Bst 500 S, BSt 500M

- Vsi zunanji robovi betonskih konstrukcij so posneti za 2.5 cm.
- Paziti na vidne površine betona.
- Minimalni preklap armaturnih palic je 50 \emptyset .
- Minimalni preklap Q mrež je 3 okna v obe smeri.

[illegible]